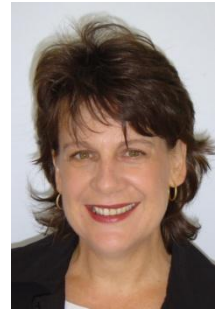


Jo McAlpine

Jo McAlpine has partnered many organisations over the last six years as a Coach, Mentor and Facilitator. She has coached executives extensively across the financial services sector, consumer electronics, education and training, publishing and government agencies and is currently a panel member and preferred coaching supplier for several top 100 organisations. Her clients include Vodafone Australia and New Zealand, Westpac, Perpetual Investments, Canon, Railcorp, Thomson Education, Ortega Publishing and the Commonwealth Bank.



With over 20 years experience in middle to senior management roles within the manufacturing, construction and telecommunications Jo has extensive practical experience in the day to day challenges of leadership. Her business experience encompasses varied roles including operations, billing, channel partner support, finance & accounting, logistics, business development, sales, HR and learning & development. At Orange/Hutchison Telecoms she was responsible for the National Operations components for the roll out of 3G technologies across the country.

Jo combines her business experience and coaching through the concepts and application of transformational learning, positive psychology and emotional intelligence practises in the workplace. These practises support organisations to achieve outstanding business results and high quality processes and outcomes through transforming individuals, teams, and organisational culture by harnessing the unrealised potential and value of the people in the business. Her specialty areas include developing high performance teams, strategy implementation, employee engagement, leadership and executive development.

Recently Jo and Integral Coaching co-partnered in the successful development of internal coaches for a global organisation that wished to develop their internal coaching capabilities to enhance employee growth, engagement and customer focus across the business. This ongoing program is considered to be one of the most sophisticated being implemented around the world.

Jo has a Masters of Applied Science with a major in Critical Perspectives of Psychological Practice and a Graduate Diploma of Psychotherapy. She has over 2500 hours of individual and group coaching experience, over 2000 hours of leadership facilitation and is an accredited Lifestyles Inventory (LSI) facilitator.

Jo McAlpine
Integral Coaching
Suite 1/110 Willoughby Rd
Crows Nest NSW 2065

Mobile: 0411 421 421
Email: jo.mcalpine@integralcoach.com.au

